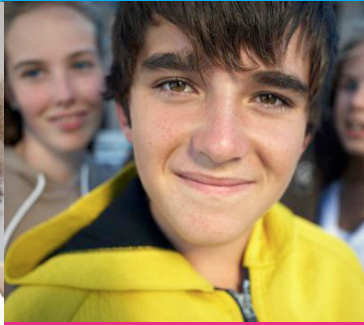




Inspiration.



Innovation.



Involvement.



**BC MENTAL HEALTH  
& SUBSTANCE USE SERVICES**  
*An Agency of the Provincial Health Services Authority*



## Discover a nursing career in specialized mental health patient care!

As part of the provincial mental health services continuum, **BC Mental Health & Substance Use Services (BCMHSUS)** provides a diverse range of specialized, “one-of-a-kind” tertiary level mental health services to residents across all geographic areas in BC. These include Adult Forensic Psychiatric Services located at the Forensic Psychiatric Hospital plus six regional clinics, and Child and Mental Youth Mental Health Services located at BC Children’s Hospital.

In addition to providing specialized mental health and addiction services, BCMHSUS also provides provincial leadership in mental health and addiction research, education and knowledge exchange, and health promotion and illness prevention in support of system-wide improvements.

If you are passionate about providing one-of-a-kind tertiary mental health and substance use patient care, we have uniquely rewarding **permanent, temporary and casual nursing, nurse practitioner and other leadership opportunities** in the following programs:

### BC Children’s Hospital

A provincial resource providing psychiatric assessment, short term treatment (including individual, family and group), and medication review for BC and Yukon children, youth, and their families.

- Child and Adolescent Psychiatric Emergency (CAPE)
- Child Psychiatry Inpatient Unit
- Provincial Specialized Eating Disorders Program for Children & Adolescents
- Adolescent Psychiatry

### Burnaby Centre for Mental Health & Addiction

A 100-bed facility, which is a province-wide resource for people who are affected by problematic substance use, mental health issues and health care concerns.

### Forensic Psychiatric Hospital & Regional Clinics across BC

A secure 190-bed hospital that treats and rehabilitates individuals who have come in conflict with the law and are deemed unfit to stand trial or not criminally responsible due to mental illness (NCRMD). Regional clinics located across BC.

### Heartwood Centre for Women

A residential treatment program for substance dependency.

### The Looking Glass Residence

A residential treatment program for young adults with eating disorders.

Ranked as one of the world’s healthiest and most livable areas, Greater Vancouver, on Canada’s west coast, is a region that’s full of life. With breathtaking natural beauty, economic prosperity, safe neighbourhoods, an excellent education system as well as an entertainment haven, this is a place where you will quickly find yourself at home.

With a strong commitment to work/life balance, competitive benefits and a collaborative work environment we know we have a career that will fit you! Relocation assistance may also be available.

Call today:

**Gurdeep Gill, Talent Acquisition Advisor**

604-875-7292

[ggill@phsa.ca](mailto:ggill@phsa.ca)

You can also apply online at [jobs.phsa.ca](http://jobs.phsa.ca).

For more information on BCMHSUS please visit: [www.bcmhsus.ca](http://www.bcmhsus.ca).



BC Mental Health & Substance Use Services is an agency of the **Provincial Health Services Authority (PHSA)** which plans, manages and evaluates specialty and province-wide health care services across BC. PHSA embodies values that reflect a commitment to excellence. *These include: Patients first • Best value • Results matter • Excellence through knowledge • Open to possibilities.*